

## **Disappearing Districts:** A hundred years of lumping and leaving!

By Tom L. Thompson, 2015

Two years after the creation of the Forest Service in 1905 it was clearly stated in the book “The Use of the National Forests” that most all the work and business the agency actually was to do and also the most of the important connection to the public was the responsibility of the Forest Supervisors and Rangers in the field. The Rangers were described as the field force and Gifford Pinchot wanted them located in central points throughout the Forests to carry out the business on the ground.



In 1910, there were thirty forests in Colorado, Wyoming, South Dakota, Nebraska, and Kansas. By 1920 the number had shrunk to 23 as smaller forests were joined together. Today there are eleven Forest Supervisors in Region 2.

More striking by comparison though is that today only about one in three of the original number of districts still exist. In 1920 there were 148 individual ranger districts identified in the Service Directory for District 2 (Region 2). The directory today, if there were one, would show only 50 districts for the Region. This number includes eight district units that were the result of adding the grasslands to the system in the 1962. So effectively for an adjusted comparison, the number today could be considered forty two rather than fifty.

Much has happened in the last century that has caused this change. Early on, one of the most dramatic changes that occurred was the automobile. When early districts were established, the

only way to travel across the reserves and forests was by horse. Indeed, many ranger district boundaries were determined by how much territory a ranger could effectively cover by horseback. When the automobile came along, adjustments needed to be made, but the transitions weren't easy.

In 1923, Forest Supervisor Wallace J. Pearce advised his Rangers that he *“did not feel that ownership of an automobile by any member of the ranger force is essential to good administration of any district on the Forest, and to get value received they should be used very carefully.”* Wallace felt that *“Ordinarily trips between two points should be made horseback across the Forest in order that the ranger may be on the scene of his normal work, being in a position to discover things that need attention.”*

Times they did change and by 1930 the number of Districts in the Region had gone from 148 down to 109 in total. Over the next three decades there were relatively few changes in numbers of districts. By 1960 there were still about a hundred districts. Most that did occur during this time in the thirties, forties, and fifties, were the result of Forest changes with the elimination of the Cochetopa, Montezuma, Leadville, Holy Cross, Washakie, and Harney forests in the Region.

From 1960 to 1980, another 26 districts were eliminated. Regional Forester Craig Rupp was not pleased with the direction this was going and in January, 1983 he wrote to the Forest Supervisors and stated emphatically that he was *“unwilling to agree to any further combinations at this point in time and for the foreseeable future.”* The essence of his position was laid out in this one paragraph:

*“The Ranger District remains the front line of the Forest Service contacts. The District personnel provide the very large majority of visible perception of ‘what the Forest Service is’ to the public. They have the day-to-day contact with the largest amount of the public and the best opportunity to: manage the resources, manage use of resources, manage activities, prevent destruction, decide local issues on local grounds, act as agents of the public, prevent mistakes rather than being reactive, and represent the Forest Service and its goals and objectives to the public.”*

He believed the arguments to combine districts that dealt with budget savings were short-sighted and the organizational loss of presence and availability to the public were just not worth it. He said he would *“rather see you return to one person Ranger districts with zoning of all technical and professional assistance, than combine Ranger Districts and lose Ranger contacts.”*

During the rest of his tenure and on into the early nineties, there were very few district combinations. But over the last twenty-five years, a couple dozen more combinations have happened and the number of district rangers in the Region is now at 50 in total.

There has been much teeth grinding and hand wringing over the years as these decisions to combine districts have happened. Many communities have felt a loss when the Forest Service decided to move out of town and at best leave a “work center”.

The Region has the distinction of probably having the largest District in the Forest Service outside of Alaska with the Gunnison District on the Grand Mesa Uncompahgre Gunnison National Forest. This one District is 1,632,136 acres which is larger than nearly two-thirds of all the Forests in the entire National Forest System.

There are none around today who likely remember the districts that disappeared in the twenties. Some of these, with names that were descriptive and uniquely colorful, were the Anthracite, Buzzard, Horsefly, Hermosa, Chimney, Navajo, Hardscrabble, Greenhorn, Shoshone, Bear River, Cottonwood, Sheephorn, Pando, Norrie, Ward, Buckhorn, Cherokee Park, Bow, Wood River, Sunlight, Crook Mountain, Merritt, Keystone, or Pringle Districts. There are another two dozen names that could be included here that were gone by 1930.

A few in our Rocky Mountaineers midst may remember district names like Treasure, Engineer, Rico, Pitkin, Bonanza, Huerfano, Westcliff, Devil's Head, Jefferson, Poncha, Sleepy Cat, Burro Mountain, Absaroka, Black Butts, La Bonet, La Prele, Porcupine, and Red Cliff that disappeared before 1960. Some of these were still around in the 1950's. There are another 19 names that could be included on this listing.

A number among us worked on the Sapinero, Tomichi, Mesa, Miguel, Glade, Alder, Bailey, Spanish Peaks, Lake George, Frying Pan, Crystal River, Hill City, Limestone, Goose, Kremmling, Laramie River, Centennial, Bow River, Encampment, Foxpark, or Pole Mountain Districts that slowly were wiped off the directory mostly in the 70's. Again, there are eleven others that also could be mentioned as disappearing in this time period before 1990.

Getting closer to home perhaps time wise, many of us were around when the Collbran, Cebolla, Taylor River, Mancos, Animas, Pine, Creede, Estes Park, Redfeather, Poudre, Brush Creek, Tensleep, and Nemo Districts were open for business. Since 1990, these and fourteen others have disappeared and no longer exist as separate units except in our memories.

Consolidation and combination decisions have generally never been easy decisions and most were done with considerable thought and analysis. In a few cases, however, decisions might have been influenced by convenient vacancies and questionable conclusions that there would be substantive cost savings and there would continue to be a significant presence in the community being vacated.

I imagine most Rocky Mountaineers would hope that the scissors, or perhaps more appropriately today, that the 'delete' button would be used very sparingly in the future as we've probably combined enough already.

For a complete historical overview of the Rocky Mountain Region's forest and district consolidations and combinations see supplemental tables, listings, timelines, and summaries on the subject that can be found in the Rocky Mountaineers website ([rockymountaineers.us](http://rockymountaineers.us)) located under the history tab.

## Alternative text and Table R-2 B

The following table identifies those district names that have disappeared since 1920 as a result of combinations, consolidations, and in some cases simply a renaming of a district.

R-2 District names that have disappeared over different time periods				
Forest	1920-30	1930-1960	1960-1990	1990-2010+
<b>Grand Mesa Uncompahgre Gunnison</b>	Anthracite, North Fork, Grand River, Big Creek, Buzzard, Horsefly, Cimarron, Lake Fork, Telluride	Black Mesa, Alpine, Crested Butte, Pitkin, Lakes, Delta	Muddy, Sapinero, Tomichi, Mesa, Miguel, North End	Collbran, Grand Jct., Cebolla, Taylor River,
<b>San Juan</b>	LaPlata, Hermosa, Chimney, Navajo	Silverton, Blanco, Rico, Treasure, Engineer,	Columbine, Glade	Mancos, Animas, Pine
<b>Rio Grande</b>		Bonanza, Carnero, South Fork, Pyramid	Alder, Alamosa	Creede
<b>Pike-San Isabel Cimarron Comanche</b>	Hardscrabble, Blanca, Greenhorn, Las Animas, Bassam, Cottonwood South Fork	Custer, San Luis, Poncha, Buena Vista, Huerfano, Westcliffe, Jefferson, Devil's Head	Spanish Peak Bailey, Lake George	
<b>White River</b>	Bear River, New Castle, Miller Creek, Shoshone, Sheephorn, Pando, Avon, Cattle Creek Norrie, Capitol Creek Dillon, Blue River	Burro Mtn., Sleepy Cat Williams Fork, Red Cliff	Crystal River, Frying Pan, Glenwood	Holy Cross, Eagle, Aspen, Sopris
<b>Arapaho Roosevelt</b>	Ward, Buckhorn, Cherokee Park	North Fork	Fraser, Kremmling Laramie River	Estes Park, Poudre, Redfeather
<b>Medicine Bow Routt</b>	Snake, Steamboat, Bow, Bear River, Sevenmile	Keystone, LaBonte LaPrele	Bow River, Pole Mtn., Centennial, Snake Rv., Encampment, Foxpark	Brush Creek, Hayden
<b>Shoshone</b>	Wood River, Sunlight, Carter Mtn., Crandall, Canyon Creek, Dubois, North Fork	Sheridan, Absaroka, South Fork		Lander
<b>Bighorn</b>	Shell	Porcupine	Goose	Medicine Wheel, Paintrock, Tensleep
<b>Black Hills</b>	Crook Mtn., Hardy, Merritt, Keystone, Pringle	Black Buttes, Rockerville	Bear Mtn., Fall River, Hill City, Limestone, Rockford	Custer, Elk Mtn., Harney, Nemo, Pactola, Spearfish
<b>Nebraska</b>			Niobrara	
<b>Total Number **</b>	<b>53</b>	<b>37</b>	<b>32</b>	<b>27</b>

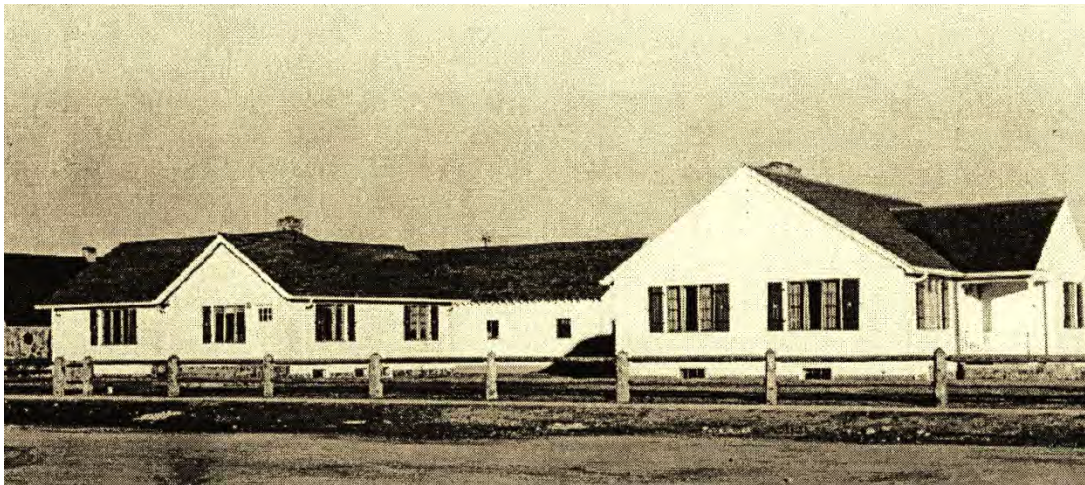
\*\*Note: These numbers are of district names that have disappeared which may reflect a combination, consolidation, or in some cases just a renaming of a district. The total numbers therefore are greater than difference between total district in 1920 versus today.

## References:

- Forest Service Directories from 1920, 1930, 1941, 1948, 1961, 1971, 1981, 1991, 2000, 2004 and on-line directory info from 2015 to obtain Region 2 information
- Letter dated January 4, 1983 from RF Craig Rupp to Region 2 Forest Supervisors
- Letter dated May 25, 1923 from Hayden National Forest Supervisor Wallace Pearce to Snake River District Ranger Percy Ray in Craig, CO.
- Photos from a National Park Service publication: *An Assessment of the Architectural and Cultural Significance of Historic Administrative Properties on the National Forests of Colorado* by Hartley and Schneck, 1996
- Publication FS 612: Establishment and Modification of National Forest Boundaries and National Grasslands: A Chronological Record: 1891-1996, November 1997
- *The Use of the National Forests*, USDA, Forest Service, Gifford Pinchot, Forester, June 14, 1907, page 27
- *A Historical Analysis of Consolidation at the National Forest and District Level in the U.S. Forest Service*, Tom L. Thompson, May 2007, 47 pages

The analysis approach and study limitations are described on the website with tables to support this writing.

Kremmling Ranger Station, 1940





Alpine Ranger Station, 1923



Bailey Ranger Station, 1939



**Supplemental Information and Tables to support the feature article in the  
June, 2015 edition of the Rendezvous entitled “Disappearing Districts”**

Provided by Tom L. Thompson, May 2015

**Contents:**

- Analysis approach and limitations
- Table A Region 2
- Table AA
- Table R-2 A
- Table R-2 B

**Analysis approach and limitations:**

To conduct this analysis, Forest Service Directories were used to determine what forests and districts existing in the beginning of each decade beginning in 1920. Because not all the directories were published at precisely the same year in each decade or at least such directories were not available to the author, there is some variation in the base years. The forests and districts were tracked by decade and changes were observed and recorded on the tables and listings that follow:

**Table A 2 Region 2** shows how the number and names of forests changed over the last hundred years and also shows the number of districts that existing starting in 1920. It also shows the general progression of where district migrated to upon combinations and consolidations. Companion tables with this same information for all Regions of the agency can be provided upon request. See the small **Table AA** to observe a summary of this information nationwide for overall district numbers.

**Table R-2 A 1** shows the names of all Districts by decade and by the Forest that they were associated with at the time with those that disappeared in a specific decade noted by being shown in gray lettering. It also shows the basic evolution of forests in Region 2 as forests were abolished and new forests were created or forests were combined or split. This chart somewhat oversimplifies these happenings as in many cases forests were split and portions ended up in multiple forests. The chart generally reflects where the major parts of the combinations ended up. Table A 2 gives a clearer picture of where all the pieces went if you follow the multiple arrows.

**Table R-2 B** shows just the names of Districts that disappeared by several different groupings of time periods.

**A-2 --- REGION 2: Summary of Forest Splits and Consolidations and District Numbers by Decade**

Est.	Forest:	1910	1920	1930	1940	1950	1960	1970	1980	1990	2000	Present
1905	Gunnison	#	7	6	6	6	6	5				
1892	<u>Battle Mesa 1908</u>											
1908	Battlement 1924	#	6	4	4	4						
1924	Grand Mesa	#										
<b>Adm</b>	<b>GrdMsUncmpGn</b>								7	7	5	5
<b>Adm</b>	Grnd.Mesa-Ump.						6	6				
1907	Ouray 1908											
1905	Uncompahgre	#	7	5	5	5						
1906	Fruita 1908											
1911	Durango 1920	#										
1905	<b>San Juan</b>	#	11	7	6	9	8	7	5	5		3
1905	Montezuma 1947	#	6	5	5							
<b>Adm</b>	San Juan-RioGrd										6	3
1908	<b>Rio Grande</b>	#	6	6	6	7	6	6	5	4		
1908	Cochetopa 1945	#	6	7	5							
1905	<u>Cochetopah 1908</u>											
1908	Pike	#	6 N	6 N	6 N	6 N	5 N	4				
1892	<u>Pikes Peak 1908</u>											
1892	Plum Creek 1905											
1892	South Platte 1905											
<b>Adm</b>	<b>Pike-San Isabel</b>								8 G2	8 G2	8 G2	8 G2
1902	San Isabel	#	7	5	5	7	7 L3	6 G2				
1905	Wet Mtns. 1908											
1907	Las Animas 1910											
1905	Leadville 1930	#	5									
1891	<u>White Rv. Plat. 02</u>											
1902	<b>White River</b>	#	7	5	5	10	8	8 N	7 N	7	7	5
1909	Sopris 1920	#										
1905	Holy Cross 1945	#	10	5	5							
1908	Arapaho	#	4	4	5	5	5	5				
1910	<u>Colorado 1932</u>	#	7	4								
1932	Roosevelt	#			4	4	6 L	5 G				
<b>Adm</b>	<b>Arapaho-Roose.</b>								6 G	6 G	5 G	5 G
1908	Routt	#	6	4	4	4	5	5	5	5		
1905	Park Range 1908											
1908	Hayden 1929	#	4									
<b>Adm</b>	<b>Med. Bow-Routt</b>										6 G	6 G
1902	MedicineBow WY	#	5	7	9	9	9 L	9 G	5 G	5 G		
1900	Crow Creek 1908											
1906	Sierra Mad. 1908											
1908	Cheyenne 1910											
1891	<u>Yellowstone 1908</u>											
1908	<b>Shoshone</b>	#	7	4	4	7	5	5	5	5	3	3
1911	Washakie 1945	#	4	3	3							
1897	<u>Big Horn 1908</u>											
1908	<b>Bighorn</b>	#	7	6	6	6	6	5	5	5	3	3

J-Job Corps Ctr. is not Included    N-Nursery is not included    G-Grassland is included    L-Land Util. Proj. is included

(Continued on next page)



**REGION 2 (continued)**

Est.	Forest:	1910	1920	1930	1940	1950	1960	1970	1980	1990	2000	Present
1908	Sundance 1915	#										
1907	Bear Lodge 1908											
1897	<b>Black Hills</b>	#	9	7	6	6	11 L	7 J	7 J	7 J	4 J	4 J
1911	Harney 1954 SD	#	7	6	6	6						
1908	<b>Nebraska</b>	#	1 N	2 N	2 N	1 N	3 LN	4G3NJ	5G3NJ	5G3NJ	5G3NJ	5G3NJ
1902	Niobrara 1908											
1902	Dismal 1908											
1906	North Platte 1908											
1971	S.McKelvie											
1905	GardnCity'12KS	#										
1908	Kansas 1916 KS	#										
1901	Wichita 1936OK	#	(1)									
1909	Michigan 1931	#	(3)									
1908	Minnesota 1928	#	(3)									
1909	Superior	#	(7)									
<b>40</b>	<b># Forests</b>	<b>30</b>	<b>23</b>	<b>21</b>	<b>21</b>	<b>17</b>	<b>15</b>	<b>15</b>	<b>12</b>	<b>12</b>	<b>10</b>	<b>11</b>
	<b># Districts</b>		<b>148</b>	<b>109</b>	<b>107</b>	<b>103</b>	<b>97</b>	<b>87</b>	<b>70</b>	<b>68</b>	<b>52</b>	<b>50</b>

J -Job Corps Ctr. Not Included      N-Nursery not included      G-Grassland included      L -Land Util. Proj. is included

- Michigan, Minnesota, and Superior Forests were included in District 2 in early years, but these District numbers are included in Region 9's totals for comparison purposes
- Wichita Forest in Oklahoma was included in District 2 until 1920's, but is included in R-8's totals for comparison
- Adm* Represents an "Administrative" designation not a "proclamation" or "congressional" designation

**Table AA**

*REGIONAL SUMMARY OF NUMBER OF DISTRICTS BY DECADE*

(Region 7 numbers shown in parenthesis for information only)

Region	1910	1920	1930	1940	1950	1960	1970	1980	1990	2000	Present
<b>Region 1</b>		154	135	106	101	100	87	71	66	61	61
<b>Region 2</b>		148	109	107	103	96	87	70	69	52	50
<b>Region 3</b>		102	85	79	73	78	75	65	59	54	53
<b>Region 4</b>		167	135	129	129	123	120	83	78	72	70
<b>Region 5</b>		82	87	91	90	100	91	79	78	65	65
<b>Region 6</b>		116	102	98	101	119	100	100	91	80	68
Region 7		(46)	(45)	(44)	(30)	(36)					
<b>Region 8</b>		40	36	69	79	112	110	107	105	91	89
<b>Region 9</b>		18	24	76	78	82	83	79	73	60	54
<b>Region 10</b>		8	8	5	9	9	10	13	14	13	13
<b>TOTAL</b>		<b>835</b>	<b>721</b>	<b>760</b>	<b>763</b>	<b>819</b>	<b>763</b>	<b>667</b>	<b>632</b>	<b>548</b>	<b>523</b>

**Table R-2 A -Names of Districts by Forests that existed at the time by decade**

1920	1930	1940	1950	1960	1970	1980	1990	2000	2010+
<b>Forest (with years of existence)      Note: <u>Districts that are tinted gray disappeared in this decade</u></b>									
<b>Gunnison    1905-</b>									
7 Black Mesa Pitkin Taylor Prk Crestd But Anthracite North Fk Sapinero	6 BlackMesa Cebolla Crestd Bte Pitkin Sapinero Taylor Prk	6 BlackMesa Cebolla Crestd Bte Pitkin Sapinero Taylor Prk	6 Cebolla CrestdBte Pitkin Paonia Sapinero Tomichi	6 Cebolla Muddy Paonia Sapinero Taylor Rv. Tomichi	5 Cebolla Paonia Sapinero Taylor Rv Tomichi				
<b>Battlement Mesa    1892-1908</b>									
<b>Battlement    1908-1924</b>									
6 Grand Rv Muddy Lakes Mesa Big Ck Buzzard									
<b>Grand Mesa    1924-</b>									
	4 Collbran Lakes Mesa Muddy	4 Collbran Lakes Mesa Muddy	4 Collbran Lakes Mesa Muddy						
<b>Grand Mesa-Uncompahgre-Gunnison</b>									
					7 Collbran Grd. Jct. Norwood Ouray Cebolla Paonia Taylr Rv	7 Collbran GrdJct Norwood Ouray Cebolla Paonia TaylrRv	5 GrdVally Gunnison Norwood Ouray Paonia	5 GrdVally Gunnison Norwood Ouray Paonia	
<b>Grand Mesa –Uncompahgre</b>									
				6 Collbran Mesa Miguel North End Norwood Ouray	6 Collbran Mesa Miguel NorthEnd Norwood Ouray				
<b>Ouray    1907-08</b>									
<b>Uncompahgre    1905-</b>									
7 North End Delta Montrose Horsefly Ouray Cimarron Lake Fork	5 Alpine Delta Miguel North End Ouray	5 Alpine Delta Miguel North End Ouray	5 Delta Miguel North End Norwood Ouray						
<b>Fruita    1906-1908</b>									

<b>Durango 1911-1920</b>										
<b>San Juan 1905-</b>										
11 Animas LaPlata Hermosa Silverton Pine Chimney Piedra Pagosa Treasure Blanco Navajo	7 Animas Silverton Pine Piedra Pagosa Treasure Blanco	6 Animas Blanco Engineer Piedra Pine Treasure	9 Animas Delores Engineer Glade Mancos Pagosa Piedra Rico	8 Animas Columbine Delores Glade Mancos Pagosa Piedra Pine	7 Animas* Delores Glade Mancos Pagosa Piedra Pine	5 Animas* Delores Mancos Pagosa Pine	5 Animas Delores Mancos Pagosa Pine		3 Columbn Delores Pagosa +CnyAn	
<b>Montezuma 1905-1947</b>										
6 Delores Mancos Glade Norwood Telluride Rico	5 Delores Glade Mancos Norwood Rico	5 Delores Glade Mancos Norwood Rico								
<b>San Juan-Rio Grande</b>										
								Colmbin Delores Pagosa Conejos DelNorte Saguach		
<b>Rio Grande 1908-</b>										
6 Pyramid Creede Alder South Fork Del Norte Conejos	6 Pyramid Creede Alder South Fork Del Norte Conejos	6 Alder Conejos Creede DelNorte Pyramid South Fk.	6 Alamosa Alder Conejos Creede Del Norte Pyramid Saguache	6 Alamosa Alder Conejos Creede Del Norte Saguache	6 Alamosa Alder Conejos Creede DelNorte Saguache	5 Alamosa Conejos Creede DelNorte Saguache	4 Conejos Creede DelNorte Saguach		3 Conejos Divide Saguache	
<b>Cochetopa 1908-1945</b>										
6 Cebolla^ Carnero Bonanza Poncha Tomichi Saguache	7 BuenaVista Leadville Poncha Saguache Tomichi Bonanza Carnero	5 BuenaVst^ Leadville Poncha Saguache Tomichi								
<b>Cochetopah</b>										

Pike 1908-									
6 Clear Ck. Jefferson S. Platte L. George DevilsHd Pikes Pk. +Nursery	6 Clear Ck. Jefferson S. Platte L. George DevilsHd Pikes Pk. +Nursery	6 Devils Hd Jefferson L. George Pikes Pk. S. Park S. Platte +Nursery	6 Bailey Devils Hd L.George Pikes Pk. S. Park S. Platte +Nursery	5 Bailey L.George Pikes Pk. S.Park S. Platte +Nursery	4 L. George Pikes Pk S. Park S.Platte +Nursery				
<b>Pikes Peak 1892-1908</b>									
<b>Plum Creek 1892-1908</b>									
<b>South Platte 1892-1908</b>									
Pike-San Isabel-Cimarron-Comanche									
					8 Carrizo Cimarron Leadville Pikes Pk Salida SanCarls S.Park S. Platte	8 Comnche Cimmarn Leadville PikesPk Salida SanCarls S.Park S.Platte	8 Comnche Cimmarn Leadville PikesPk Salida SanCarls S.Park S.Platte	8 Comnche Cimmarn Leadville PikesPk Salida SanCarls S.Park S.Platte	
San Isabel 1902-									
7 Hardscrable Greenhorn Westcliff Salida San Luis Blanca Las Animas	5 Custer Huerfano San Luis Span. Pk. Westcliffe	5 Custer Huerfano San Luis Span. Pk. Westcliffe	7 BuenaVst Huerfano Leadville Salida San Crlos Span. Pk. Westcliffe	7 Leadville Salida San Carlos Spanish Pk LUPco 22 LUPco 4 LUPks 21	6 Leadville Salida San Carlos SpanishPk ComanchG CimarronG				
<b>Wet Mountains 1905-1908</b>									
<b>Las Animas 1907-1910</b>									

Leadville 1905-1930									
6 Bassam Cottonwod Leadville Dillon Blue River South Fk.	6 Bassam Cottonwod Leadville Dillon Blue River South Fk								
<b>White River Plateau 1891-1902</b>									
White River 1902-									
7 Burns Hole Sleepy Cat WilliamsFk Bear River New Castle Miller Ck. Shoshone	5 Burns Hole Burro Mtn Glenwood Sleepy Cat WillmsFk	5 Burns Hole Burro Mtn Glenwood Sleepy Cat WillmsFk	10 BurnHole^ Aspen BurroMtn CrystalRv Eagle FryingPan Glenwood HolyCros SleepyCat WillmsFk	8 Aspen Blanco Crystal Rv Eagle FryingPan Glenwood HolyCross Rifle	8 Aspen Blanco CrystalRv Eagle FryingPan Glenwood HolyCross Rifle +MtSoprisN	7 Aspen Blanco Dillon Eagle HlyCross Rifle Sopris +MSNur	7 Aspen Blanco Dillon Eagle HlyCross Rifle Sopris	7 Aspen Blanco Dillon Eagle HlyCross Rifle Sopris	5 Asp/Sop Blanco Dillon Egl/HCrS Rifle
<b>Sopris 1909-1910</b>									



Holy Cross 1905-1945			
10 Sheephorn Pando unit Red Cliff Avon Eagle Cattle Ck. Norrie Aspen CapitolCk. Crystal Rv	5 Aspen Crystal Rv Eagle Frying Pan Red Cliff	5 Aspen Crystal Rv Eagle Frying Pan Red Cliff	

Arapaho 1908-							
4 Willms Fk FraserByers Sulphur North Fk	4 Willms Fk FraserByers Sulphur North Fk	5 Clear Ck Dillon Fraser Kremmlg Sulphur	5 Clear Ck Dillon Fraser Kremmlg Sulphur	5 Clear Ck Dillon Fraser Kremmling Sulphur	5 Clear Ck Dillon Fraser Kremml. Sulphur		
Colorado 1910-1932							
7 Boulder Ward Estes Prk Buckhorn Poudre CherokPrk North Fk	4 Boulder Estes Park LaramieR Poudre						
Roosevelt 1932-							
	4 Boulder Estes Prk LaramieR Poudre	4 Boulder EstesPrk LaramieR Poudre	6 Boulder Estes Park LaramieRv Poudre Redfeather LUP21	5 Boulder EstesPark Poudre Redfeather Pawnee G.			
Arapaho-Roosevelt							
				6 Boulder Clear Ck EstPoud Pawnee Rdfeathr Sulphur	6 Boulder ClearCk EstPoud Redfeath Sulphur Pawnee	5 Boulder ClearCk CanyLks Sulphur Pawnee	5 Boulder ClearCk CanyLks Sulphur Pawnee

Routt 1908-								
6 Bears Ears Hahn's Pk Gore Park Range Steamboat Snake	4 Bears Ears Hahns Pk Gore N. Park	4 Bears Ears Hahns Pk Gore N. Park	4 Bears Ears Hahns Pk Gore N. Park	5 Bears Ears Hahns Pk. Gore NorthPark Yampa	5 Bears Ear Hahns Pk Gore NorthPark Yampa	5 BearEars HahnsPk MiddlePrk NorthPrk Yampa	5 BearsEar HahnsPk MiddlePrk NorthPrk Yampa	
Park Range 1905-1908								

<b>Hayden 1908-1929</b>									
4 Big Ck. Encampmt North End Snake Rv.									
<b>Medicine Bow-Rouff</b>									
							6 Brsh/Hay Laramie DougTB Hahn/Br Yampa Parks	6 Brsh/Hay Laramie DougTB Hahn/Br Yampa Parks	
<b>Medicine Bow 1902-</b>									
5 Foxpark Keystone Brush Ck Bow Sevenmile	7 Brush Ck Centenial Encmpmt Foxpark Keystone LaBonte LaPrele Pole Mtn Snake Rv	9 Brush Ck Centenial Encmpmt Foxpark Keystone LaBonte LaPrele Pole Mtn Snake Rv	9 Brush Ck Centenial Encmpmt Foxpark Keystone LaBonte LaPrele Pole Mtn Snake Rv	9 Bow River Brush Ck Centennial Encampmt Foxpark LaramiePk Pole Mtn Snake Rv +LUPw21	9 Bow River Brush Ck Centennial Encampmt Foxpark LaramiePk Pole Mtn Snake Rv. ThdrBaG	5 BrushCk Hayden Laramie LarmePk ThdrBaG	5 BrushCk Hayden Laramie Douglas ThdrBaG		
<b>Crow Creek 1900-1908</b>									
<b>Sierra Madre 1905-1908</b>									
<b>Cheyenne 1908-1910</b>									

<b>Yellowstone 1891-1908</b>									
<b>Shoshone 1908-</b>									
7 WoodRiver Greybull Carter Mtn. Canyon Ck North Fk. Sunlight Crandall	4 Clarks Fk Greybull So. Fork Wapiti	4 Clarks Fk Greybull So. Fork Wapiti	7 Absaroka Clarks Fk Greybull Lander So. Fork Wapiti Wind Rv.	5 Clarks Fk Greybull Lander Wapiti Wind Rv	5 Clarks Fk Greybull Lander Wapiti Wind Rv	5 ClarksFk Greybull Lander Wapiti WindRv	5 ClarksFk Greybull Lander Wapiti WindRv	3 North Z. Washake WindRv	3 North Z. Washake WindRv
<b>Washakie 1911-1945</b>									
4 Absaroka Sheridan Dubois Lander	3 Absaroka Lander Sheridan*	3 Absaroka Lander Sheridan							

<b>Bighorn 1897-1908</b>									
<b>Bighorn 1908-</b>									
7 Buffalo Goose Paintrock Porcupine Tensleep Tongue Shell	6 Buffalo Goose Paintrock Porcupine Tensleep Tongue	6 Buffalo Goose Paintrock Porcupine Tensleep Tongue	6 Buffalo Goose Paintrock Porcupine Tensleep Tongue	6 Buffalo Goose Med.Whl Paintrock Tensleep Tongue	5 Buffalo Med. Whl. Paintrock Tensleep Tongue	5 Buffalo MedWhl Paintrock Tensleep Tongue	5 Buffalo MedWhl Paintrock Tensleep Tongue	3 PowdrRv MW/PR Tongue	3 PowdrR MW/PR Tongue

<b>Sundance 1908-1915</b>									
<b>Bearlodge 1907-1908</b>									
<b>Black Hills 1897-</b>									
9 Spearfish Crook Mtn. Hardy Rochford Merritt Pactola Nemo Bearlodge Black Btts	7 Bearlodge Limestone Nemo Pactola Rockford Spearfish BlackButtes*	6 Bearlodge Limestone Nemo Pactola Rockford Spearfish	6 Bearlodge Limestone Nemo Pactola Rockford Spearfish	11 Bearlodge Bear Mtn Custer Elk Mtn Fall Rv. Hill City Limestone Nemo Pactola Rochford Spearfish +LUPsd12	7 Bearlodge Custer Elk Mtn Harney Nemo Pactola Spearfish +BxeldJCC	7 Bearlodg Custer ElkMtn Harney Nemo Pactola Spearfsh +BxelJC	7 Bearlodg Custer ElkMtn Harney Nemo Pactola Spearfsh +BxelJC	4 Bearlodg Cust/Elk Pact/Hrn Spr/Nem	4 Bearlodg Hell Cyn Mystic N. Hills
<b>Harney 1911-1954</b>									
7 Keystone Hill City Bear Mtn. Custer Pringle Elk Mtn. Limestone	6 Bear Mtn Custer Elk Mtn. Fall Rv Hill City Rockerville	6 Bear Mtn Custer Elk Mtn. Fall Rv Hill City Rockerville	6 Bear Mtn Custer Elk Mtn. Fall Rv Hill City Rockerville						

<b>Nebraska 1908-</b>									
1 Niobrara +BessyNur	2 Bessey Niobrara +BessyNur	2 Bessey Niobrara +BessyNur	2 Bessey Niobrara +BessyNu	3 Bessey Niobrara LUPN1 +BessyNur	4 (3G) Bessey PineRidge Fall River Wall Buff.GapG FtPierreG OglalaG +PneRgJCC +BessyNur	5 Bessey FallRiver PineRdg Wall Pierre +Nursy +PnRdJC	5 Bessey FallRiver PineRdg Wall Pierre +Nursy +PnRdJC	5 Bessey FallRiver PineRdg Wall Pierre +Nursy +PnRdJC	5 Bessey FallRiver PineRdg Wall Pierre +Nursy +PnRdJC
<b>Niobrara 1902-1908</b>									
<b>Dismal 1902-1908</b>									
<b>North Platte 1906-1908</b>									
<b>Sam McKelvie 1971-</b>									
<b>Garden City 1905-1912</b>									
<b>Kansas 1908-1916</b>									
<b>Wichita 1901-1936</b>									

These Forests below were only a part of Region or District 2 for a very short period of time and are not included in the Regions summary records-----

<b>Michigan 1909-1931</b>	
4 Tawas Mio Marquette Au Sable	
<b>Minnesota 1909-1928</b>	
3 Cass Lake Bena CutfootSox	
<b>Superior 1909-</b>	
4 Sioux Rv Big Lake Kawishiwi N. Shore	

Totals from **Table R-2 A** by Decade

1920	1930	1940	1950	1960	1970	1980	1990	2000	2010+
148*	109	107	103	96	87	70	69	52	50
*Does not include MI, MN, Superior districts									

## Table R-2 B

The following table identifies those district names that have disappeared since 1920 as a result of combinations, consolidations, and in some cases simply a renaming of a district.

R-2 District names that have disappeared over different time periods				
Forest	1920-30	1930-1960	1960-1990	1990-2010+
<b>Grand Mesa Uncompahgre Gunnison</b>	Anthracite, North Fork, Grand River, Big Creek, Buzzard, Horsefly, Cimarron, Lake Fork, Telluride	Black Mesa, Alpine, Crested Butte, Pitkin, Lakes, Delta	Muddy, Sapinero, Tomichi, Mesa, Miguel, North End	Collbran, Grand Jct., Cebolla, Taylor River,
<b>San Juan</b>	LaPlata, Hermosa, Chimney, Navajo	Silverton, Blanco, Rico, Treasure, Engineer,	Columbine, Glade	Mancos, Animas, Pine
<b>Rio Grande</b>		Bonanza, Carnero, South Fork, Pyramid	Alder, Alamosa	Creede
<b>Pike- San Isabel Cimarron Comanche</b>	Hardscrabble, Blanca, Greenhorn, Las Animas, Bassam, Cottonwood South Fork	Custer, San Luis, Poncha, Buena Vista, Huerfano, Westcliffe, Jefferson, Devil's Head	Spanish Peak Bailey, Lake George	



<b>White River</b>	Bear River, New Castle, Miller Creek, Shoshone, Sheephorn, Pando, Avon, Cattle Creek Norrie, Capitol Creek Dillon, Blue River	Burro Mtn., Sleepy Cat Williams Fork, Red Cliff	Crystal River, Frying Pan, Glenwood	Holy Cross, Eagle, Aspen, Sopris
<b>Arapaho Roosevelt</b>	Ward, Buckhorn, Cherokee Park	North Fork	Fraser, Kremmling Laramie River	Estes Park, Poudre, Redfeather
<b>Medicine Bow Routt</b>	Snake, Steamboat, Bow, Bear River, Sevenmile	Keystone, LaBonte LaPrele	Bow River, Pole Mtn., Centennial, Snake Rv., Encampment, Foxpark	Brush Creek, Hayden
<b>Shoshone</b>	Wood River, Sunlight, Carter Mtn., Crandall, Canyon Creek, Dubois, North Fork	Sheridan, Absaroka, South Fork		Lander
<b>Bighorn</b>	Shell	Porcupine	Goose	Medicine Wheel, Paintrock, Tensleep
<b>Black Hills</b>	Crook Mtn., Hardy, Merritt, Keystone, Pringle	Black Buttes, Rockerville	Bear Mtn., Fall River, Hill City, Limestone, Rockford	Custer, Elk Mtn., Harney, Nemo, Pactola, Spearfish
<b>Nebraska</b>			Niobrara	
<b>Total Number **</b>	<b>53</b>	<b>37</b>	<b>32</b>	<b>27</b>

**\*\*Note:** These numbers are of district names that have disappeared which may reflect a combination, consolidation, or in some cases just a renaming of a district. The total numbers therefore are greater than difference between total district in 1920 versus today.